

Reference : C-L20H30 8F-8H+F

The Fixolite box is a 6 m long prefabricated lintel box designed to receive a closure (roller shutter, BSO, etc.). The box consists of an inverted U-shaped, fire-retardant expanded polystyrene (30 kg/m³ density) shell reinforced with steel mesh. The side walls are fitted with aluminum rails.

Half-Lintel model box. This box is suitable for "block-bay" closures: one-piece systems which combine closure and shutter. The box is certified by Technical Advice to the CSTB.

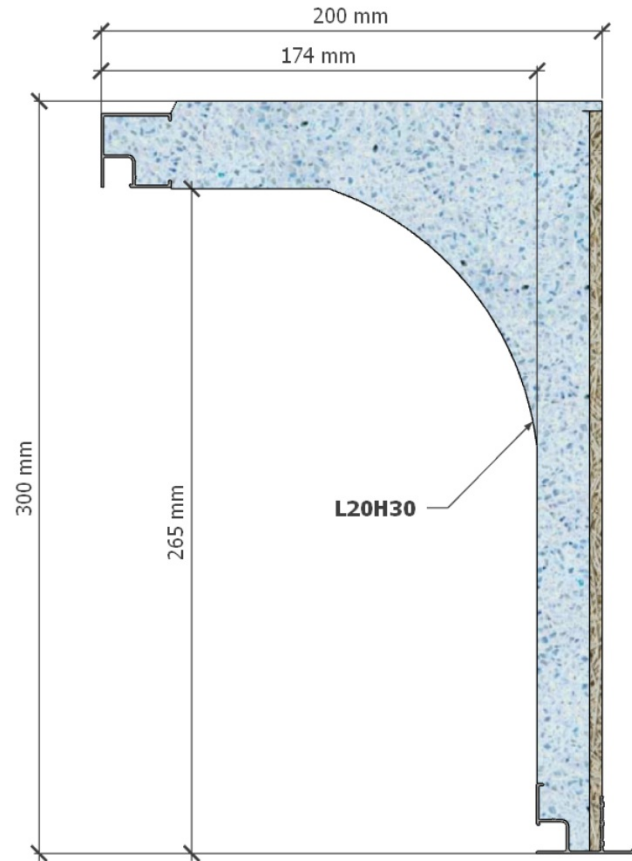
Type	L20H30
Outer rail ref.	8F
Inner rail ref.	8H
Color	Blue polystyrene
Compatible cheek	J-L20
Certification	CSTB 16-23-796 (translated)
Thermal conductivity	U = nan W/m ² .K
Thermal resistance*	R = nan m ² .K/W
(*) R: thermal resistance (m ² .K/W) taking into account a λ coefficient of 0.0374 W/m.K after application of a safety coefficient of 1.15.	
Weight	2.84 kg/m
Reaction to fire	class E (EN ISO 11925-2/EN 13 501)
Air permeability	c*3 class
Acoustic perf. (Dn _W)	-

Box dimensions

Width	200 mm
Height	300 mm
Tunnel	174 mm
External side	- mm
Internal side	26 mm

Components

Wood-cement fiber	1.2 kg/m
Aluminium (recycl. 85%)	0.58 kg/m
Steel (recycl. 96.5%)	0.61 kg/m
Polystyrene (recycl. 10%)	0.45 kg/m
Total	2.84 kg/m



Box shown: C-L20H30 8-8H F

Sides finishing

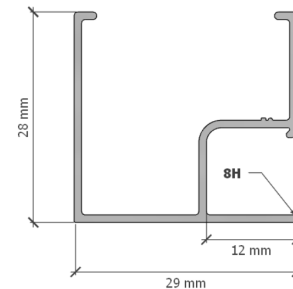
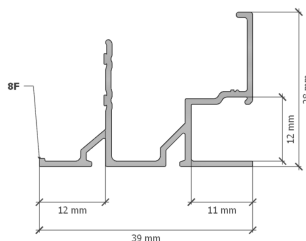
External side
Wood-cement fiber



Internal side
Ribbed polystyrene



Rail diagram



English version Version française



2024-05 • Fixolite Disclaimer. The information provided in this technical sheet is for reference only and without warranty of accuracy or completeness. Fixolite disclaims any liability for errors, omissions, or consequences related to the use of this information. Specifications are subject to change without notice.